
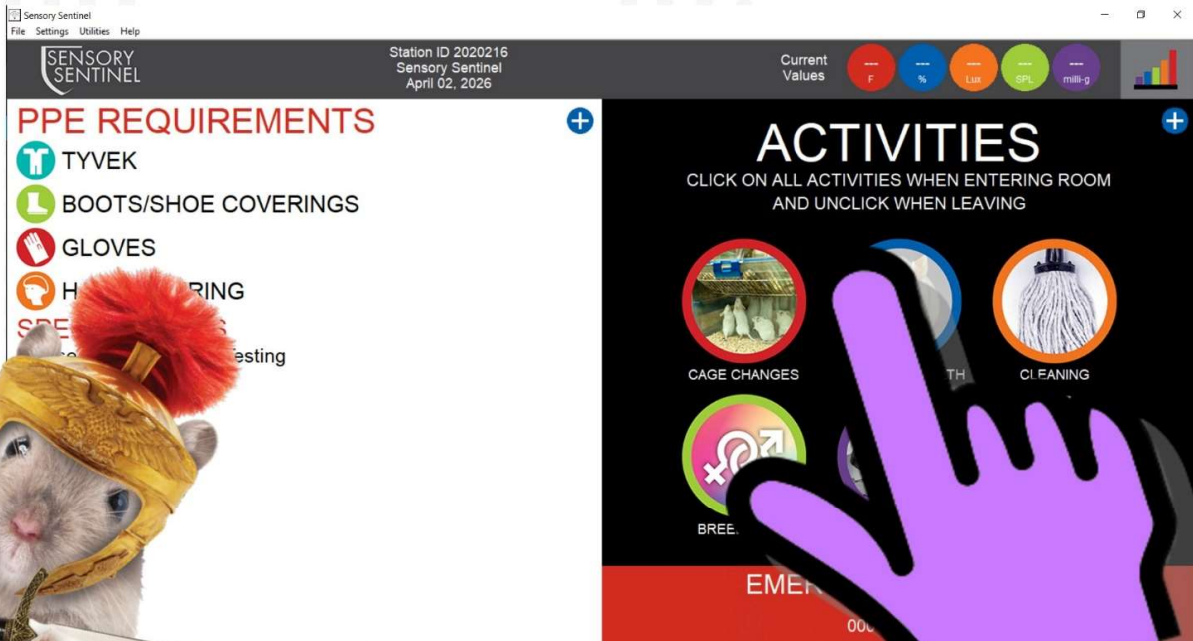


SENSORY SENTINEL

TURNER SCIENTIFIC 

Check-In Screen Guide



Check-in Screen Overview



1 Activities Menu

2 Custom Activity Icon

3 PPE & Notes Menu

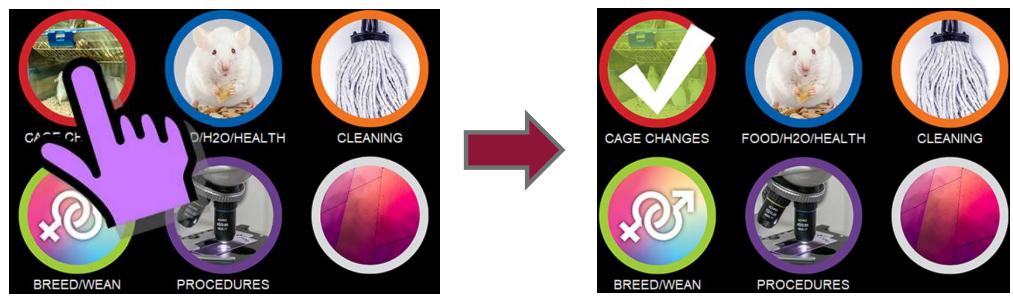
4 Station ID, System Name & Date

5 Current Values

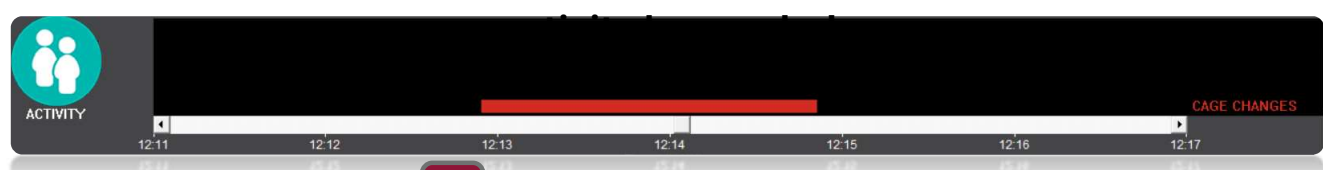
6 Data Icon

The Check-in screen is the primary menu for staff information, notifications and activity logging.

1 Activities Menu



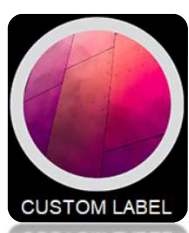
Important data can be collected by indicating when activities are being performed. To record this data, select the icon for the activity to be performed. A white checkmark will indicate that the activity has been selected and is being logged. This will also disable nuisance alarms that may result from the work being performed. Once work is completed, de-select the activity and the checkmark will disappear to confirm the



2 Custom Activity



Select the blue plus at the bottom of the Activity Menu to create a custom activity.



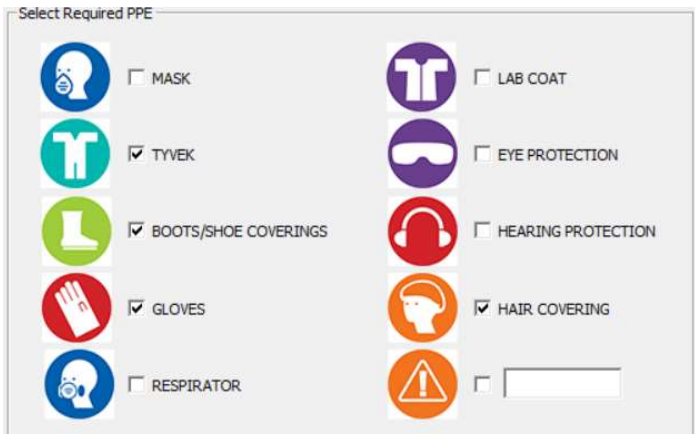
This custom label will be saved and indicated on the Data Log Screen when activated.



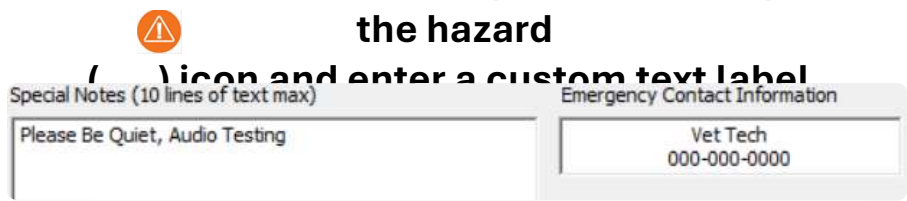
3 PPE & Notes Menu



To provide PPE requirements (optional), select the blue plus (+) at the top right of the PPE Requirements section. Select any PPE Images to display.



Once completed, select the box next to the PPE Image to designate required PPE with a checkmark. To input custom requirements, select the hazard



Special Notes and Emergency Contact Information can be used for notetaking, advanced notifications for room entry, and who to contact in emergencies, though not limited to these and allows any text.

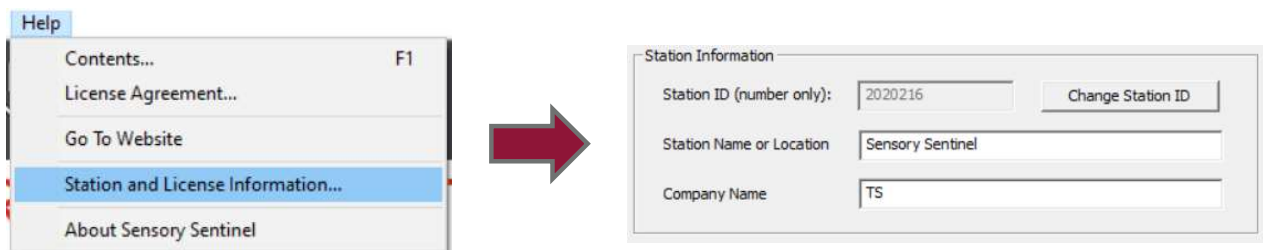
SPECIAL NOTES
Please Be Quiet, Audio Testing



4 Station ID, System Name and Date

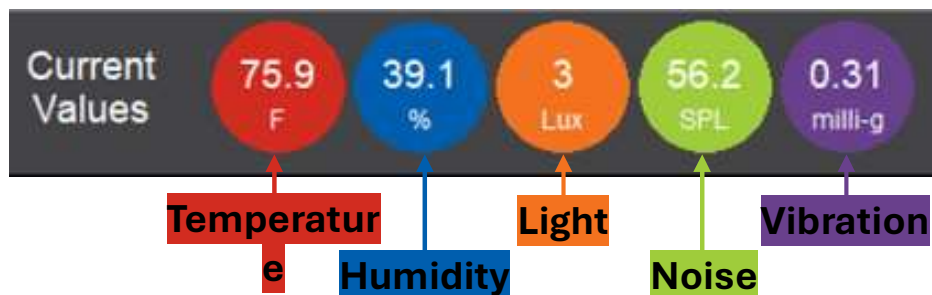
Station ID 2020216
Sensory Sentinel
April 02, 2026

At the top of the screen will be the Station ID. Think of it like a Serial number for the program running on the Sensory Sentinel.



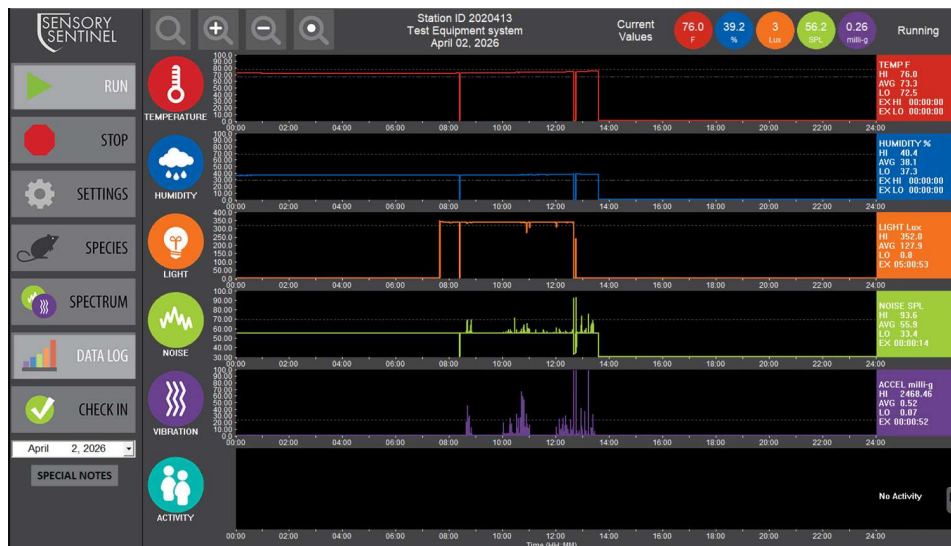
The System name is a custom entry, usually chosen by us before it arrives to you. It is used to identify the physical Sensory Sentinel device. It can be customized in the “Station and License Information” menu in the “Help” tab.

5 Current Values



The Current Values display is the current environmental data your Sensory Sentinel is collecting. From left to right is Temperature, Humidity, Light, Noise and Vibration.

6 Data Icon



The Data Icon at the top right of the Check-in screen will open the Data Log screen. This screen allows you to view live data, or historical data using the calendar menu on the bottom left of the screen.

The Data Log Screen will time out and return to the Check in Screen after 30 seconds. To disable this feature, select the blue plus (+) under the Data Icon.

Contact Turner Scientific for additional support at info@turnerscientific.com

